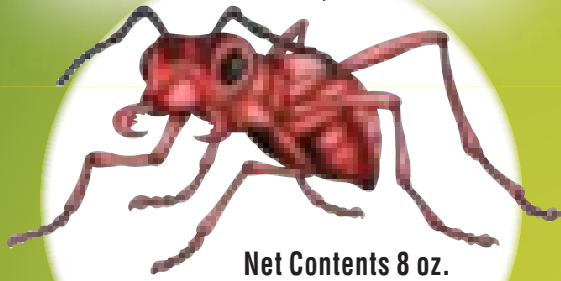


GROUP 1 INSECTICIDE

Hi-Yield[®] Fire Ant Control with Acephate



Net Contents 8 oz.

ACTIVE INGREDIENT:

Acephate (O, S-Dimethyl

Acetylphosphoramidothioate) 75%

Other INGREDIENTS: 25%

TOTAL: 100%

By Wt. **KEEP OUT OF REACH OF CHILDREN**

CAUTION

See Side Panels For Additional
Precautionary Statements,
See Booklet For General
Information, Storage and
Disposal and Conditions of Sale
and Limitation of
Warranty and Liability.

AGRICULTURAL USE REQUIREMENTS (Continued)

PPE required for early entry to treated areas that is permitted under the Worker Protection Standard and that involves contact with anything that has been treated, such as plants, soil, or water, is: coveralls, chemical-resistant gloves made of any waterproof material, and shoes plus socks.

NON-AGRICULTURAL USE REQUIREMENTS

The requirements in this box apply to uses of this product that are NOT WITHIN the scope of the Worker Protection Standard for agricultural pesticides (40 CFR Part 170). The WPS applies when this product is used to produce agricultural plants on farms, forests, or greenhouses.

Do not enter or allow others to enter until dusts have settled.

NON-FOOD, NON-FEED PRODUCING AREAS

Plant	Insects	Amount of Hi-Yield Fire Ant Control with Acephate	Use Instructions
Turfgrass Residential, recreational, and commercial turf Non-Crop Areas (field borders, fencerows, roadsides, ditchbanks, borrow pits)	Imported Fire Ants	Evenly distribute 1 to 2 teaspoons over the mound.	For best results apply the material in the early morning or late afternoon when the ants are most active. Applications made under prolonged hot and dry conditions may be ineffective due to the location of the ants deep within the nest. Grass in treated area may be injured.

Do not treat mounds more than once per season.

Do not allow livestock to graze treated areas.

Do not feed treated grass to livestock.

Do not apply more than 4 lbs./A to sod farms and 5 1/3 lbs./A to golf courses.

Manufactured By:



230 FM 87 • BONHAM, TX 75418

EPA Reg. No. 70506-1-7401

EPA Est. No. 7401-TX-01

Visit Us At: www.hi-yield.com



10M-2-310