



Your new Powder Trap for cluster flies is designed to hang directly from your window glass. Your trap hangs from one of the adhesive strips included with each trap. Please read and follow the directions carefully to make sure your trap stays on the glass and is working properly.

If you have any difficulty please contact us directly by phone or email and we would be more than happy to help.

Email: [help@powdertrap.com](mailto:help@powdertrap.com)

Toll free: 1-877-359-7687

Visit [www.PowderTrap.com](http://www.PowderTrap.com) for detailed directions, tips and helpful information.

v18

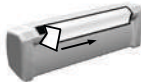
## INSTALLATION DIRECTIONS

**1** Clean the bottom corner of your window glass using clean water or alcohol. Scrub and dry with newsprint to remove all dirt, oil and other cleaning products. Even dried window cleaner residue will cause your trap to fall from the glass.

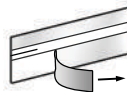
**2** Level the powder inside your trap by shaking it horizontally and tapping the bottom a few times on a hard surface.



**3** Slowly peel off the white cloth tape sealing the window slot. The powder inside flows like a liquid. Do not spill.

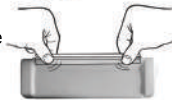


**4** Locate one of the long flat plastic strips that came with your trap. Each plastic strip has a wide band of adhesive tape along one side and a narrow band of adhesive tape along the other side. Position the plastic so the wide tape is running along



the bottom edge of the strip. Carefully peel away only the wide pink backing on one side of the strip to reveal the sticky tape beneath.

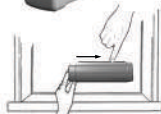
**5** Stick the plastic strip to the back of the trap right along the open edge of the slot keeping the narrow pink tape above the top of the trap. Firmly press the tape onto the back of your trap, smoothing out air bubbles with your fingers.



**6** Next, carefully peel away the narrow pink backing from the top of the plastic strip to reveal the sticky tape beneath.



**7** Position and level your trap in the bottom corner of the window. Firmly press the tape onto the glass, smoothing out air bubbles with your fingers.



\* Keep the spare plastic strip in a safe place in case you want to move your trap. The powder is non-toxic. Keep out of children's reach. Clean with a damp cloth.



# CLUSTERBUSTER

QUICKSAND<sup>®</sup> FOR CLUSTER FLIES

- 1** Clean the bottom corner of your window glass using fresh water or rubbing alcohol. Scrub and dry with newsprint to remove all dirt, oil and other cleaning products. Even dried window cleaner residue will cause your trap to fall from the glass.
- 2** Carefully peel the pink backing from the two adhesive strips found on the back of your trap. **2** Do not touch or wrinkle the sticky adhesive strips left on your trap.
- 3** Level the powder inside your trap by shaking it horizontally and tapping the bottom a few times on a hard surface. **3**

- 4** Position and level your trap in the bottom corner of the window before touching it to the glass. Once leveled press it firmly to the glass for several seconds allowing the adhesive time to stick. **4** Test the adhesion of your trap periodically to ensure your trap stays on the glass.
- 5** While pressing your trap firmly to the glass peel off the wide cloth tape sealing the window slot. **5** Your new Cluster Buster<sup>®</sup> will start catching active insects immediately!

## INSTALLATION DIRECTIONS

This amazing, simple device from Powder Trap<sup>®</sup> is proven to eliminate your cluster fly problem when used as a system. Break the entry-exit cycle by installing one trap in each problem window to capture flies before they return to the cracks at night. You must prevent them from refreshing the pheromone trails that lead ever more flies back in. Any problem windows left without a trap will continually draw in new flies, quickly filling up traps in other windows.

**FROM POWDER TRAP INC.<sup>®</sup>**

Visit [www.PowderTrap.com](http://www.PowderTrap.com) for detailed directions, tips and helpful information.